



产品特征 (KEY FEATURES) :

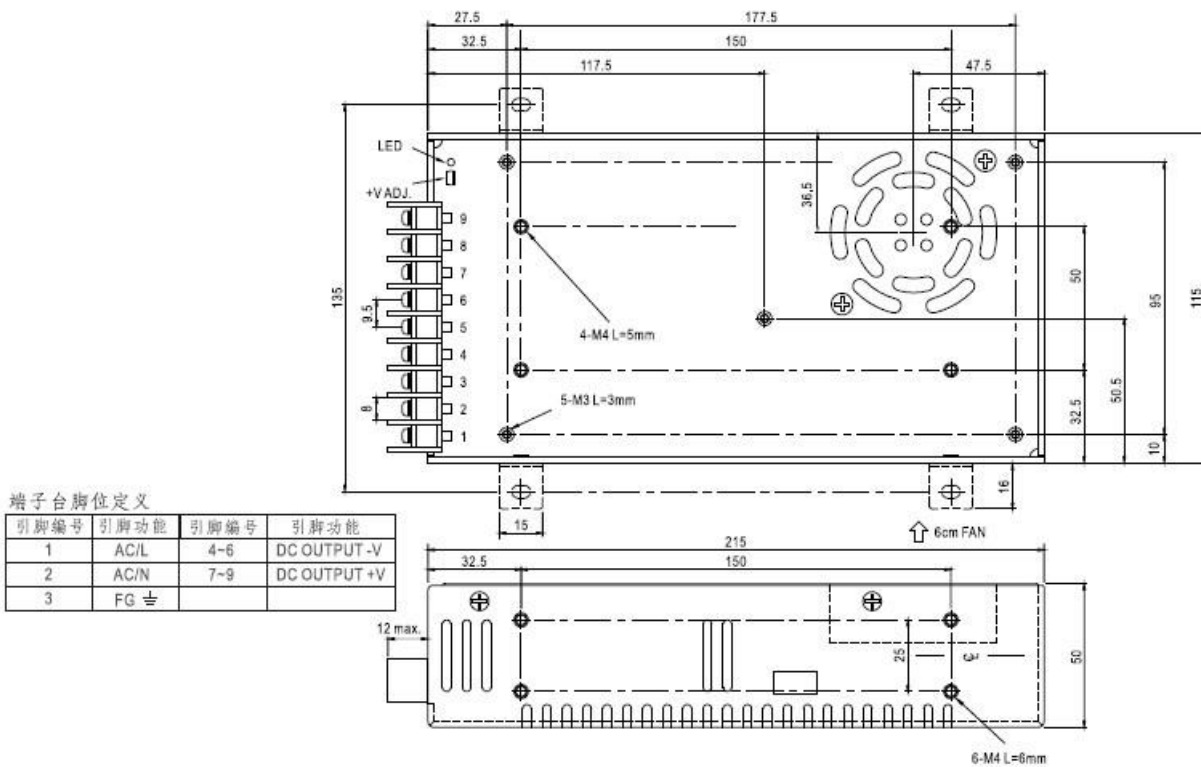
- 输入电压 176~265VAC 或 90~135VAC
- 工业级产品设计, 可靠性高
- 低纹波、噪声
- 输出过载、短路保护
- 高效率、高功率密度质优价廉
- 低功耗、绿色环保
- 100% 负载老化和测试

电气规格 (ELECTRICAL SPECIFICATIONS)

			SAK350-S24	SAK350-S36	SAK350-S48
输出特性 (output)	型号 (MODEL)				
	输出电压 (output VOLTAGE)		24V	36V	48V
	输出电流 (output CURRENT)		14.5A	9.7	7.3
	效率 Efficiency (typ)		87%	87%	88%
	纹波 & 噪声 (Ripple and Noise) 注 note 2		150mV	150mV	150mV
	输出方式	single			
	功率范围 (output power)	350W			
	输出电压精度 (output Accuracy)	±2.0% @100%load			
	源效应 (Line Regulation)	±1.0% @100%load			
	负载效应 (Load Regulation)	±1.0% @10-100%load			
输入特性 (input)	启动上升时间 (SETUP, RISE TIME)	50ms/230VAC @100%load			
	输出保持时间 (HOLD-UP TIME) TYP	30ms/230VAC @100% load			
	输入电压范围 (input voltage)	176 ~ 265VAC 或 90-135VAC 拨开关档			
	标称输入电压 (input voltage)	220VAC			
	输入频率 (input Frequency)	47 ~ 63Hz, 440Hzmax			
保护特性 (protection)	输入电流 (input current)	1.2A / 230VAC			
	冲击电流 (in rush current)	COLD START 60 A / 230 VAC			
	漏电流 (Leakage Current)	<0.5mA at 230VAC/50Hz			
工作环境 (work environment)	过流保护 (Over current Protection)	110%~120% load, 故障排除后可自恢复 (recovers automatically after fault condition is removed)			
	过温保护 (over Temperature Protection)	有, 故障排除后可自恢复 (recovers automatically after fault condition is removed)			
	短路保护 Short Circuit Protection	有, 故障排除后可自恢复 (recovers automatically after fault condition is removed)			
安全与电磁兼容 (safety and EMC) -注 3	工作温度 (Operating Temperature)	-40 ~ +75 °C (根据输出负载降额曲线使用 with derating)			
	存储温度 (Storage Temperature)	-40 ~ +105,			
	工作湿度 (Humidity)	10 ~ 85% RH			
	温漂系数 (Temperature Coefficient)	0.03%/ (0~ 50°C)			
	震动系数 (Vibration)	10~500Hz,2G10min./1cycle, 60min.each along X,Y,Z axes			
	冷却方式 (Cooling Method)	自然冷却 (Free air convection)			
	安全标准 (Safety standards)	IEC60950,EN60950,UL60950			
	安全等级 (Safety Class)	CLASS I			
	绝缘电压 (Isolation)	I/P-O/P:3KVAC I/P-FG(CASE):1.5KVAC O/P-FG(CASE):0.5KVAC			
	绝缘电阻 (isolation resistance)	I/P-O/P,I/P-FG,O/P-FG:>100M Ohms/500VDC 25°C 70% RH			
其它(other)	传导与辐射 (EMI / RFI conducted)	EN55011, EN55022 (CISPR22) class A			
	静电放电 (ESD)	IEC/EN 61000-4-2 level 4 8kV/15kV			
	射频辐射抗扰 (RF)	IEC/EN 61000-4-3 level 4			
	电快速瞬变脉冲群 (EFT)	IEC/EN 61000-4-4 level 4 4kV			
	浪涌 (SURGE)	IEC/EN 61000-4-5 level 4 2kV			
备注(note)	MTBF	165K hrs min. MIL-HDBK-217F(25)			
	尺寸(Dimension)	215*115*50mm (L*W*H)			
备注(note)	1. 以上数据除特殊说明外, 都是在 TA=25°C, 湿度<75%, 输入标称电压 230Vac 和输出额定负载时测得; (All parameters NOT specially mentioned are measured at 230VAC input, rated load and 25 of ambient temperature)				
	2. 纹波与噪声是使用 300mm 的双绞线, 同时终端并联一个 0.1uF 的高频陶瓷电容和一个 47uF 的电解电容测得的。(Ripple & noise are measured at 20MHz of bandwidth by using a 12" twisted pair-wire terminated with a 0.1uf & 47uf parallel capacitor)				
	3. 电源在系统内是被视为元器件, 需结合终端设备进行电磁兼容相关确认。(The power supply is considered a component which will be installed into a final equipment. The final equipment must be re-confirmed that it still meets EMC directives.)				

机械尺寸图 (Dimension)

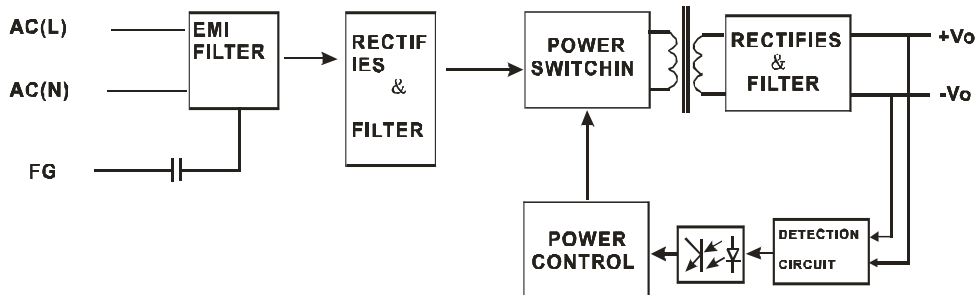
Unit: mm



端子台脚位定义

引脚编号	引脚功能	引脚编号	引脚功能
1	AC/L	4-6	DC OUTPUT -V
2	AC/N	7-9	DC OUTPUT +V
3	FG 地		

产品原理图 (Block Diagram)



降额曲线图 (Output Derating)

